



Chiswick Lane, London, W4 2JQ

£750,000

WHITMAN & CO.

SALES · LETTINGS · COMMERCIAL

- Over 1250 sqft of Accommodation
- Small shop unit
- Separate first floor studio unit
- Off street parking

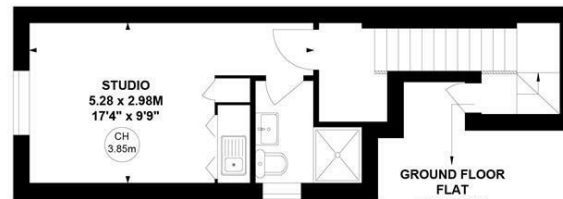
- Independent ground floor flat
- Patio garden
- New 999 years lease
- No onward chain

Tenure - Leasehold with share of freehold
 Lease length - 999 years remaining
 Ground rent - peppercorn
 Service charge - £1000 pa
 Local authority - Hounslow
 Council tax - Band E

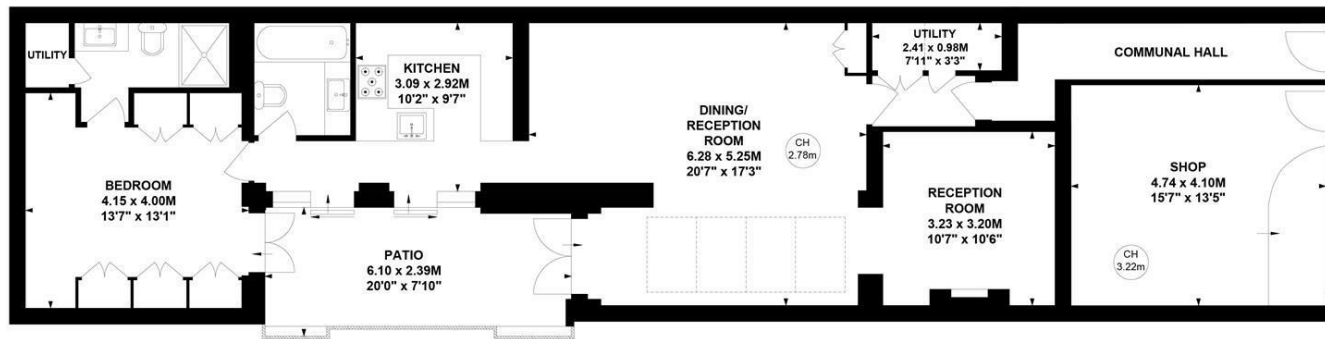
Chiswick Lane, W4

Approximate gross internal area
120.45 sq m / 1297 sq ft
 (Excluding Communal Spaces)

Key :
 CH - Ceiling Height



First Floor



Ground Floor

Not to scale, for guidance only and must not be relied upon as a statement of fact.
 All measurements and areas are approximate only

THE PROPERTY

An exceptionally unusual and adaptable property with both residential, investment and commercial use, ideally located in the heart of Chiswick.

The property includes over 1250 sqft of accommodation with a small shop unit, an independent ground-floor flat, patio garden, off-street parking, and a separate first-floor studio unit.

Close proximity to Turnham Green Tube Station and the extensive range of shops, bars and restaurants on Chiswick High Road. No onward chain.

SITUATION



5-7 Turnham Green Terrace, Chiswick, London, W4 1RG
 Tel 020 8747 8800

E-mail sales@whitmanandco.com
 Website www.whitmanandco.com